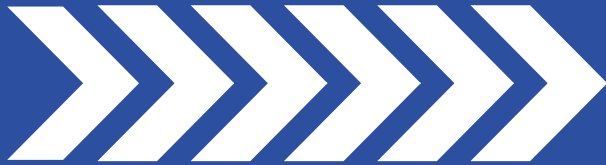


E-Z RIDER®

Heavy Duty Clutches
Made in the U.S.A.



Technical Hot Sheet

CLUTCH INSTALLATION TOOL KIT



- Flywheel Gauge •*
- Clutch Alignment Pins •*
- Disc Alignment Shaft •*
- Shaft Removal Tool •*
- Clutch Adjustment Gauge •*

For Immediate Assistance

1-800-325-6138

24/7 TECHNICAL SUPPORT

CLUTCH INSTALLATION TOOL KIT

TOOL KIT ATK-200

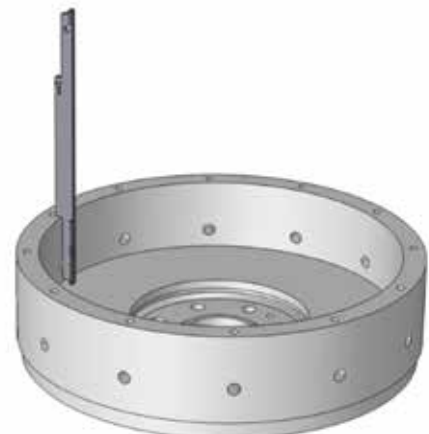
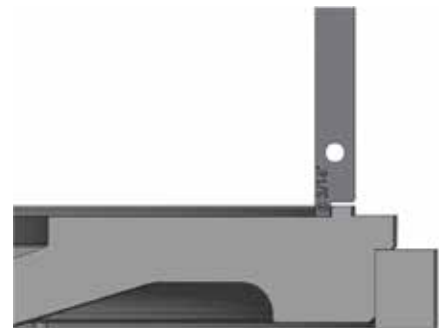
This clutch installation tool kit was designed with the mechanic in mind. Take the guesswork out of your next install!

Flywheel Gauge



This gauge is for measuring the flywheel after it has been resurfaced to ensure proper clutch operation and longevity. The gauge is designed to measure 3 dimensions:

1. You must have a minimum of 5/16" distance from the friction surface of your flywheel to the top of the bolt head that holds the flywheel to the crankshaft. If it is less than 5/16", you need a NEW flywheel. **If this dimension is less than 5/16" the dampener of the clutch disc will hit the crank bolts and cause failure.**
2. Clutch centering lip cannot be greater than 3/16" deep. This dimension increases as the flywheel wears or is ground for resurfacing. **If it is greater than 3/16" the clutch will not bolt tight to flywheel.**
3. For correct clutch operation on a 14" pot style flywheel this dimension must be 2.937". When resurfacing these flywheels you must remove the same amount from the clutch mounting surface as you do the friction surface to maintain 2.937".



Note: On Pot Style Flywheel, drive pins must be replaced with every clutch. If they are not replaced and made square, the center plate can bind up.

CLUTCH INSTALLATION TOOL KIT

Clutch Alignment Pins

These pins are to aid in the installation of the clutch cover assembly to the flywheel. Install these pins in the top two clutch mounting bolt holes.

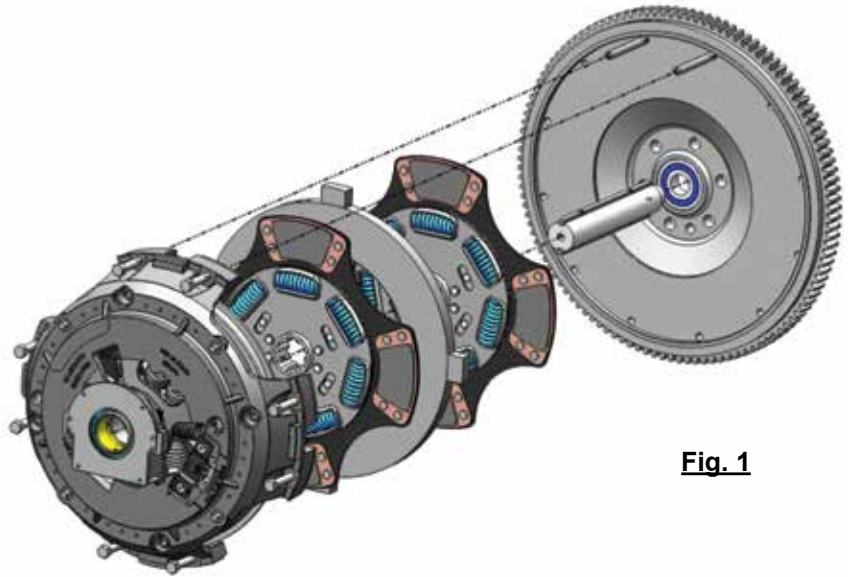
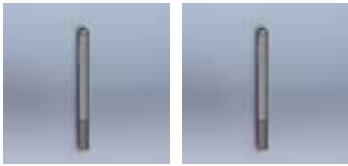


Fig. 1

Disc Alignment Shaft

This shaft is to aid in proper alignment of the clutch disc and clutch assembly at installation.

Referencing Fig. 1, place the alignment shaft in the pilot bearing and install correct clutch disc oriented the proper way. Place the center plate in flywheel housing, making sure a lug is between the clutch alignment pins. Install remaining clutch disc oriented the proper way. Install clutch cover assembly over alignment shaft and utilizing clutch alignment pins, position the center plate in the cover.

Shaft Removal Tool

Once clutch is installed to the flywheel and the other mounting bolts are installed, remove pins and install the last two mounting bolts. Tighten to proper torque.

Once the clutch is properly bolted to the flywheel and the shipping blocks have been removed, install T-handle (Fig. 2) in the end of the disc alignment shaft (Fig. 3) and remove from clutch assembly.

Fig. 3



Clutch Adjustment Gauge

This gauge is for measuring the dimensions between the clutch release bearing and the clutch brake (1/2"), and the dimension between the clutch fork (when using mechanical linkage) and release bearing wear pads (1/8"). These measurements ensure proper clutch adjustment.



Ace-Mfg.com



ACE

Manufacturing & Parts Co.

American Made Clutches Since 1967

300 Ramsey Street
Sullivan, MO 63080
U.S.A.

Toll Free: 800-325-6138

Fax: 573-468-5584

customerservice@ace-mfg.com